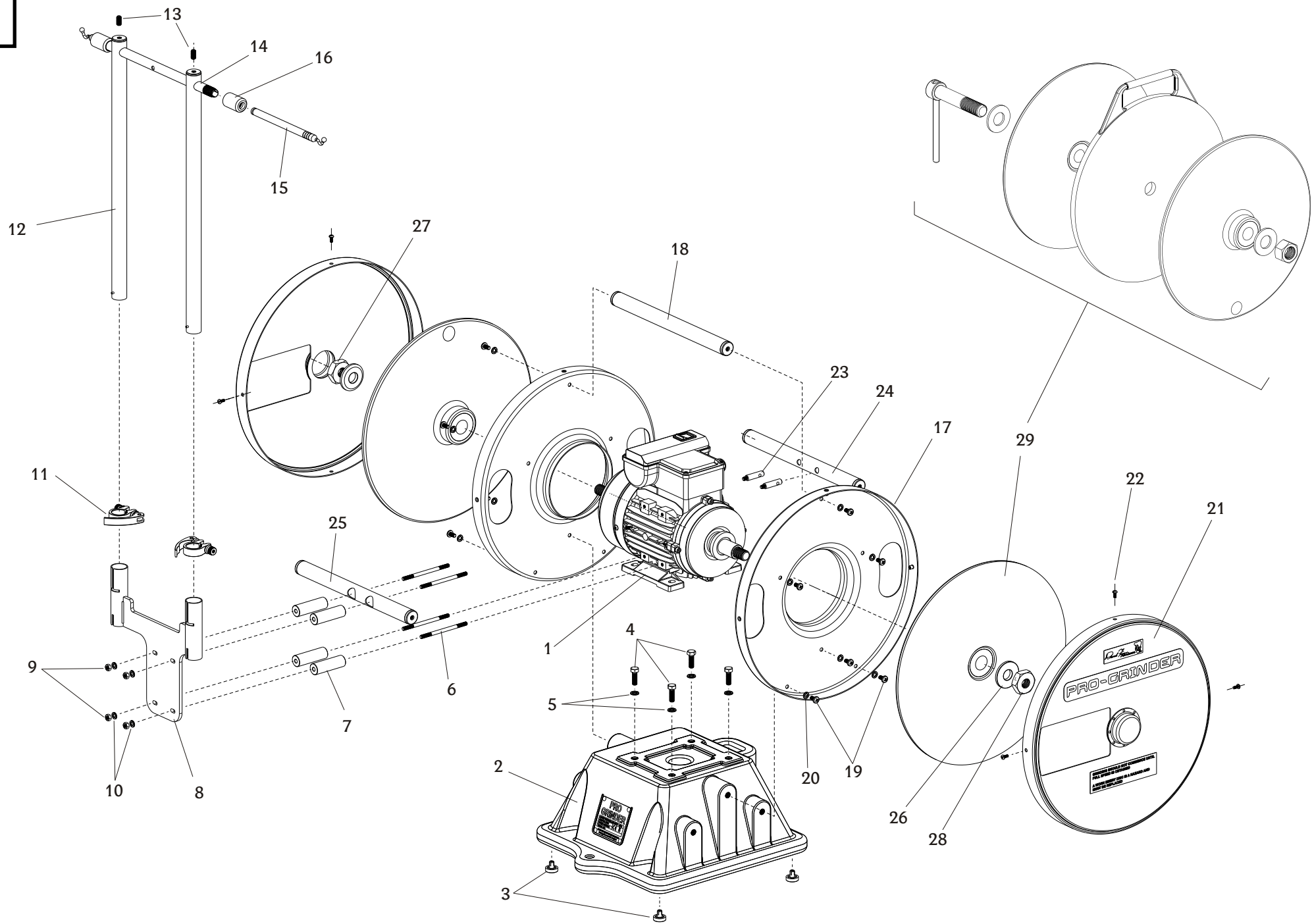


4



Lista de Partes Pro Grinder (Fig 4)

Item	Part No.	Description	Qty
1.	233-12040	Motor Assy (240V 50Hz - UK)	1
or	233-12050	Motor Assy (240V 50Hz - EUR)	1
or	233-12060	Motor Assy (110V 60Hz - USA)	1
or	233-12070	Motor Assy (240V 50 Hz - AUS)	1
		(All include Adaptors & relevant Mains Leads)	
2.	233-12130	Grinder Base Assy (Includes item 3)	1
3.	233-12150	Rubber Foot	4
4.	233-11130	Screw M8 x 25	4
5.	233-11140	Spring Washer M8	4
6.	233-12180	Stud for Grinder Motor	4
7.	233-12190	Spacer	4
8.	233-12200	Pendulum Bracket Assy	1
9.	289-18980	Nut M6	4
10.	289-18990	Spring Washer M6	4
11.	233-12230	Lever Clamp Assy	2
12.	233-12240	Pendulum Upright Assy	2
13.	233-12450	Grubscrew M8 x 16	2
14.	SG36974A	Pendulum Tube	1
15.	SG36975A	Pendulum Arm	2
16.	SG36976A	Pendulum Tube Nut	2
17.	233-12290	Grinder Backguard	2
18.	233-12300	Handle Assy	1
19.	289-16040	Screw M6 x 12	12
20.	289-18990	Spring Washer M6	12
21.	233-12320	Grinder Frontguard Assy	2
22.	233-12390	Screw M4 x 10	6
23.	233-12460	Stud for Brace	2
24.	233-12480	Brace Assy	1
25.	233-12500	Brace Assy (Bracket Side)	1
26.	233-12360	Spindle Washer	2
27.	233-12370	Spindle Nut RH	1
28.	233-12380	Spindle Nut LH	1
29.	233-11590	Aluminium Disc & Clamp Plate Set	1
or	233-11710	Cast Iron Disc & Clamp Plate Set (See Fig 5 for items included)	

GARANTÍA

Ítems que requieran reparaciones cubiertas por la garantía deben ser devueltas
a Lister Shearing - Chile
(Datos de Contacto al final del documento)